

# ADAMS



**Adams and Associates Engineers, PLLC**  
**Firm Profile eBrochure**

## eBrochure Quick Links

[Introduction](#)

[Full MEP Services](#)

[Firm Experience](#)

[Contact Info](#)

[www.adamsmep.com](http://www.adamsmep.com)



# MEP Engineers for Long Term Solutions



## Specializing In...

- Full Service MEP Design
- HVAC and Plumbing Systems Design
- Electrical Design and Arc Flash Studies
- Revit & Building Information Modeling (BIM)
- Fire Protection Design and Evaluation
- Whole Building Commissioning
- Energy Assessment and Energy Modeling

## INTRODUCTION

Adams and Associates Engineers, PLLC:

- More than 40 years of experience
- Services for All Building Types
  - ➔ Mechanical, Electrical, Plumbing (MEP), and Fire Protection Design
  - ➔ Commissioning and Energy Modeling Services

## WHAT MAKES US DIFFERENT?

Several benefits that make us unique:

- Heavy principal/engineer involvement
- Two Arizona offices
- Flexibility to meet your needs
- Tech-savvy employees that cover all MEP services!

## Adams Contact Info

**PHOENIX OFFICE**  
480-407-6787

**TUCSON OFFICE**  
520-323-3858

[info@adamsmep.com](mailto:info@adamsmep.com)  
[www.adamsmep.com](http://www.adamsmep.com)

[Click to Learn More](#)



# MEP Engineers for Long Term Solutions



## FIRM EXPERIENCE

We have a vast amount of experience with many different building types:

- Medical facilities
- Governmental agencies
- Educational facilities
- High-rise buildings
- Laboratories and clean rooms
- Resorts and hospitality
- Warehouses and manufacturing
- Religious facilities
- Mixed-use properties

We design for:

- New construction
- Renovations
- Remodels
- Tenant improvements
- Equipment and systems upgrades



# Experienced Engineers for All Your MEP Needs



## FULL MEP SERVICES

# ADAMS

Adams is a full service consulting engineering firm that provides in-depth design for Mechanical, Electrical, and Plumbing (MEP) aspects of any type of commercial project.

- Experts in MEP consulting with decades of experience
- Fully coordinated and designed in house to provide the best product for our clients
- Green build projects, renovations, tenant improvements, and equipment replacements
- Your long term partner, supporting the project past final completion
- Design-Build, Design-Bid-Build, and Construction Manager at Risk (CMAR)
- Additional benefits of in-house Commissioning, Fire Protection Engineering, and Energy Modeling
- Focused on Energy Conservation and Life Cycle Cost Analysis
- Committed to Exceed Expectations
- Design services tailored to meet your needs



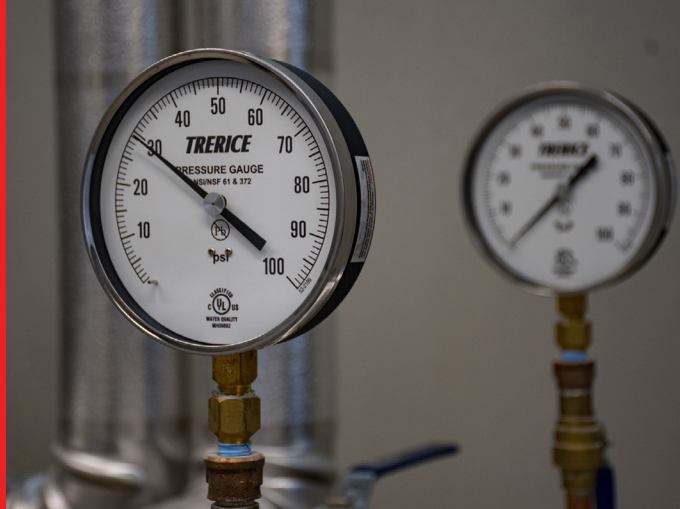
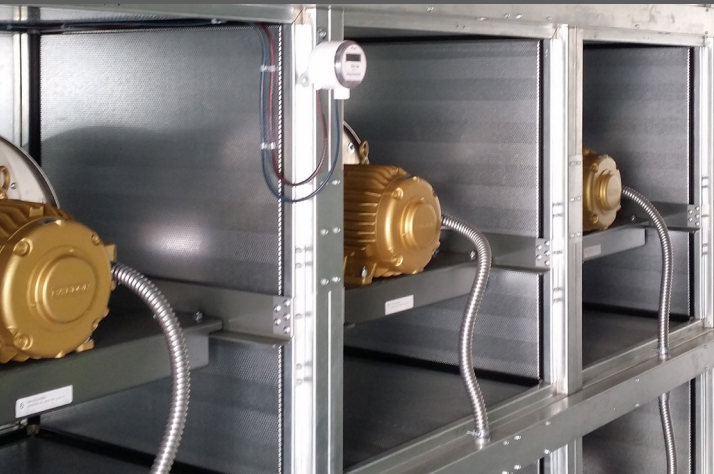
[Click to Learn More](#)

[Full MEP Services](#)

# MECHANICAL DESIGN

Mechanical system designs are essential to occupant comfort and process functions.

- Heating, Ventilation, and Air Conditioning (HVAC) Systems
- Air-Cooled and Water-Cooled Chilled Water Plants
- Medium and High Temperature Heating Water Plants
- Energy Management and Control System (EMCS)
- Air Handling Units with Humidity Control
- Mission Critical and Data Rooms
- Low and High Pressure Steam Plants
- Air and Water-Side Economizers
- Clean Rooms – Site Built and Modular
- Laboratory and Hazardous Exhaust Systems
- Kitchen Exhaust and Make-Up Air
- Demand Controlled Ventilation
- Hybrid Heating and Domestic Hot Water Plants
- Cogeneration Plants



# PLUMBING DESIGN

We design systems that bring water into the building for human use, and we remove waste-water of various types to keep the building clean.

- Domestic Water Supply and Distribution Systems
- Waste, Vent, and Rainwater Conveyance
- Fuel Gas Piping
- Low-Flow, High-Efficiency Plumbing Fixtures
- High-Efficiency Water Heaters and Domestic Boilers
- Medical Gas Systems per NFPA 99
- Commercial Kitchen and Laundry Design
- Solar Thermal Domestic Water Heating Systems
- Booster Pump Stations
- Process Gas and Water Systems
- Compressed Natural Gas (CNG) System

# ADAMS

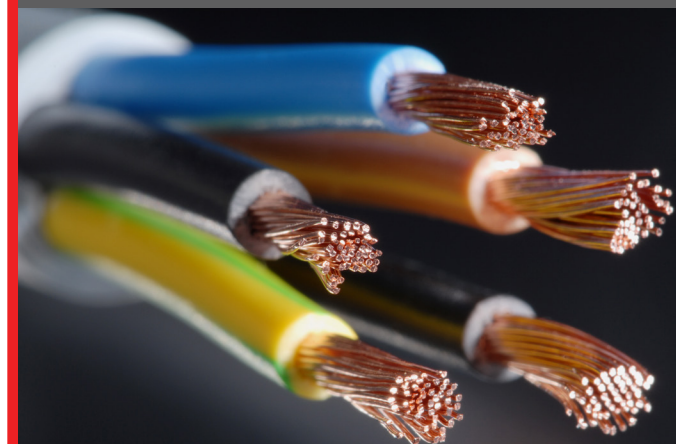
# ELECTRICAL DESIGN

Electrical systems are essential to each project and help enhance all other disciplines.

Since electrical design is an integral part of the functionality of a building, it requires precise coordination with other trades and disciplines.

The Adams team takes great pride in this coordination.

- Power Design
- Lighting Design
- Special Systems Design
- Electrical One-Lines
- Panel Schedules
- Generator Sizing (legally required and optional Standby)
- Emergency Systems
- Photometric Calculations
- Arc Flash, Arc Fault, and Coordination Studies
- Energy Code Compliance





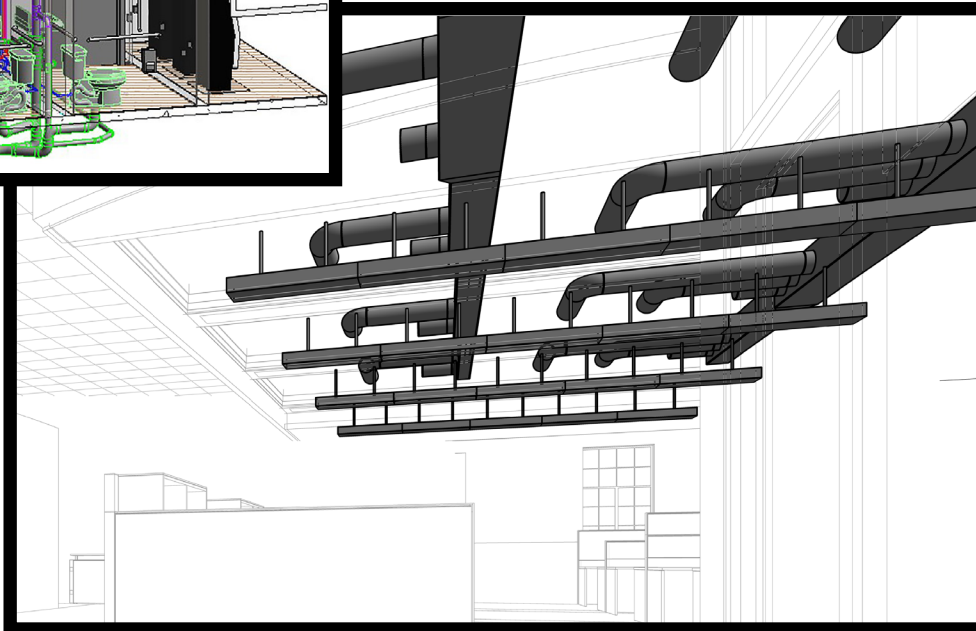
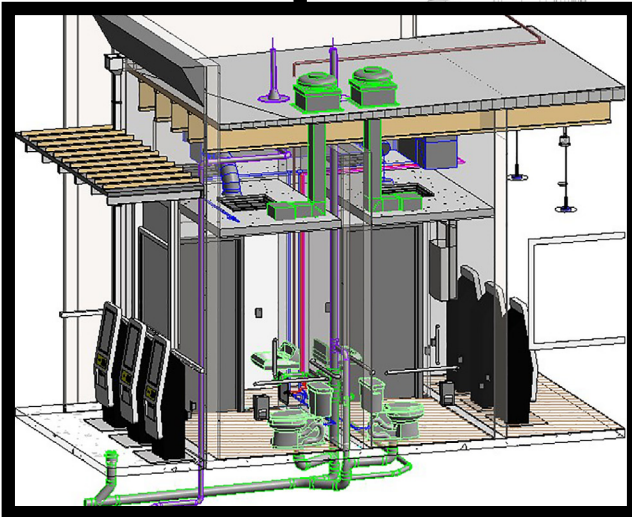
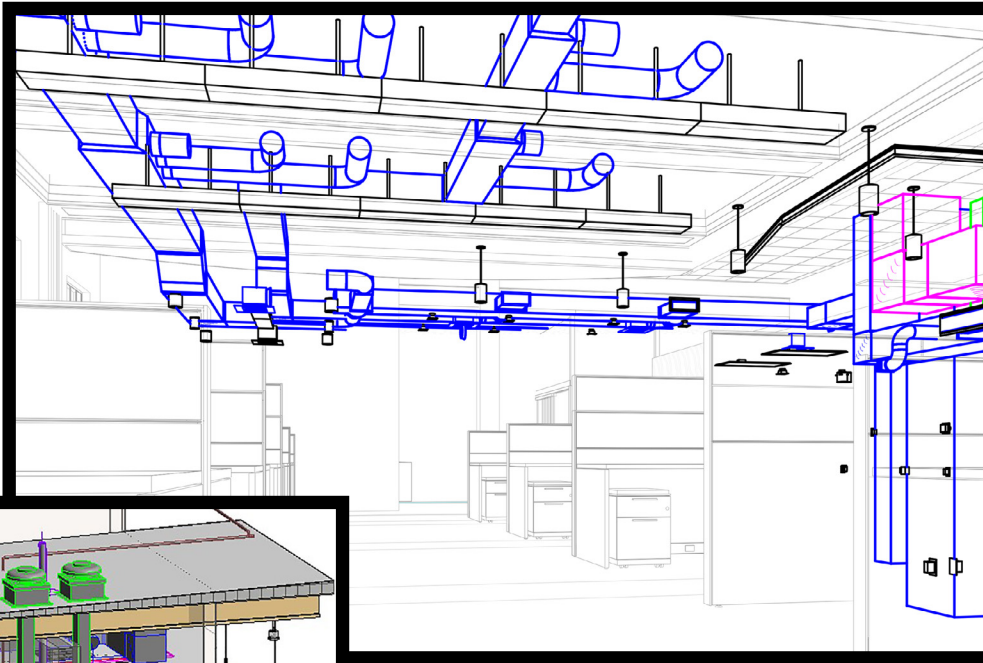
# REVIT AND BIM

We use Autodesk Design Suite and have the ability to leverage the use of parametric 3D modeling software:

- ▶ Revit MEP
- ▶ BIM 360 (Document Management / Design Collaboration Platform)

## Engineering Benefits:

- Communicate our design intent
- Collaborate with the project design/ construction teams more effectively
- Enables our clients to visualize what the finished product will look like before construction is even started
- Creates an intelligent 3D design model of the MEP systems coordination
- Helps make critical cost and timesaving decisions during the design phase
- Produces higher quality work by identifying potential problems during the design process
- Identify key challenges and reduces the amount of RFI's during construction





# ADAMS

MECHANICAL ■ ELECTRICAL ■ FIRE PROTECTION ENGINEERS

## ENERGY MODELING

Our engineers perform energy assessments and energy modeling to find efficient, cost effective, and environmentally responsible solutions. After the energy assessment is complete, we use our expertise as design engineers to implement the recommended energy conservation measures.

- ASHRAE Level I, II, and III Energy Assessments
- Certified Energy Manager (CEM)
- Investment Grade Audits
- Whole-Building Energy Modeling
- LEED EAc1 Documentation
- Life Cycle Cost Analysis
- Sustainability Analysis
- Due Diligence Report
- Carbon Footprint Analysis

## FIRE PROTECTION

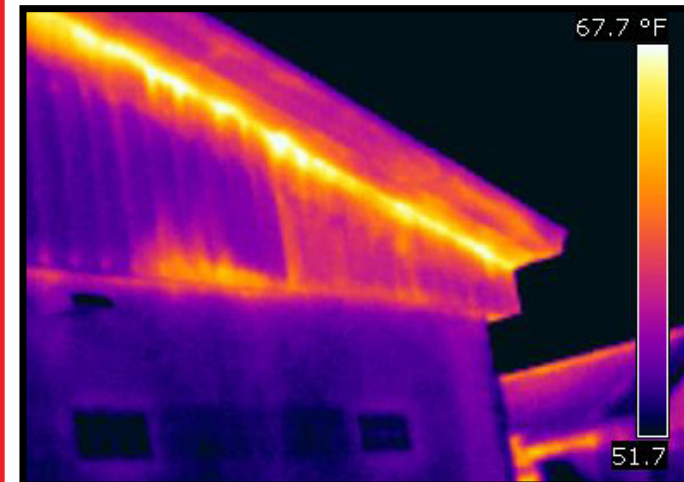
Our expertise in fire suppression, fire detection, and smoke control systems keeps people and property safe.

- Wet, Dry, and Pre-Action Sprinkler Systems
- Fire Alarm and Mass Notification Systems
- Clean Agent Fire Suppression Systems
- Fire Pumps and Pump Control Systems
- Smoke Control Systems
- Standpipe Systems
- Passive Fire Protection Engineering

## COMMISSIONING

Our Commissioning Authorities (CxAs) are certified by the AABC Commissioning Group to verify that a building's systems - including HVAC, electrical, fire suppression, fire alarm, special systems, and building envelope - all operate as efficiently as possible according to the Owner's Project Requirements.

- Whole-Building Commissioning
- LEED Fundamental and Enhanced Commissioning
- Re- and Retro-Commissioning
- New Construction and Continuous Commissioning
- International Energy Conservation Code (IECC) Commissioning



[Click to Learn More](#)

[Additional Services](#)



# ADAMS

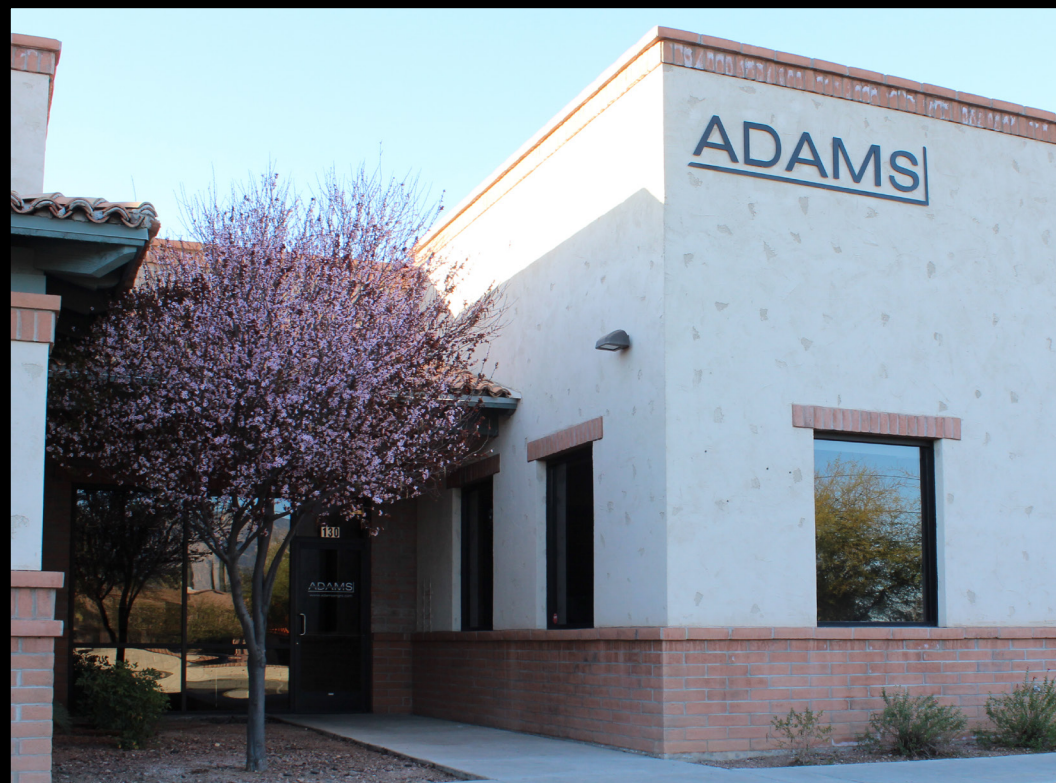
MECHANICAL ■ ELECTRICAL ■ FIRE PROTECTION

**CONTACT US TODAY!**



## **PHOENIX OFFICE**

14425 N. 7<sup>th</sup> St., Ste. 105  
Phoenix, Arizona 85022  
480-407-6787  
[info@adamsmep.com](mailto:info@adamsmep.com)



## **TUCSON OFFICE**

6422 E. Speedway Blvd., Ste. 130  
Tucson, Arizona 85710  
520-323-3858  
[info@adamsmep.com](mailto:info@adamsmep.com)

**Or Click Here To Visit Us Online**